

# MILLER REVOLUTION™ HARNESSES

THE TURNING POINT  
IN HARNESS DESIGN!



## Now Available:

- **Arc-Rated** (Meets stringent ASTM F887-05 arc-flash standards)
- **Derrick/Oil Rig** (Greater mobility)
- **Tower Climbing** (Specially-designed suspension loops & waist front D-ring)
- **Construction** (Designed for tough environments)
- **Vinyl-Coated** (Designed for dirty job environments)

Call for details

# MILLER®

by Honeywell

A close-up photograph of a Miller Revolution Harness. The image shows a dark grey plastic buckle with a silver metal D-ring. Straps made of dark grey webbing with green and white stitching are attached to the buckle. The Miller Revolution logo is embossed on the buckle. The background is a dark green gradient with a faint grid pattern.

# MILLER REVOLUTION™ HARNESSES

**A QUANTUM LEAP IN DESIGN,  
INNOVATION AND 21ST CENTURY  
SAFETY TECHNOLOGY.**

The Miller® brand has become synonymous with product innovation with many leading edge fall protection products over the past three decades. Not resting on their laurels, Miller embarked on a product development project to design and redefine the very essence of the full-body harness.

While adhering to global safety standards for fall protection, Miller Engineering, along with the resources of a leading industrial design firm, set out to create and reinvent full-body harness technology. In the process, unbridled innovation was incorporated into the most unique and functional fall protection available.

Based on key, user-identified needs, a fall protection harness was developed that meets and/or exceeds expectations of users well versed in the delicate balance of safety and functionality while working at heights. The Miller Revolution Harness addresses "non-negotiable" key benefits identified by those professionals using fall protection equipment:

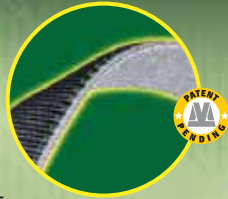
- **Comfort**
- **Fit**
- **Ease-of-use**
- **Stylish**
- **Durability**
- **Flexibility**
- **Compliance**
- **Convenience**

The Miller Revolution Harness is **the** preferred harness of choice in the following industries: Wind Energy, Oil & Gas, Construction, Utilities and General Industry.

# ENGINEERED WITH 7 UNIQUE COMPONENTS AND MORE THAN 11 KEY PRODUCT FEATURES

## DUALTECH™ WEBBING

- **Donning made easy with two-sided, contrasting color webbing and textures**
- Webbing engineered with *shape-retention memory* for a more comfortable fit
- Unique circular tack provides greater strength, and contrasting colors make inspection easier
- Tested to 7,000 lbs. tensile strength (40% stronger than ANSI requirements) for greater safety and longer service life



## WEB FINIALS

- **Clip-on design safely organizes webbing after proper adjustment**
- Constructed of durable, high-impact resistant polymer
- Provides positive gripping surface for easy web adjustment



## CAM BUCKLE

- **Easy, one-hand adjustment/release allows simultaneous adjustment of shoulder straps**
- Promotes proper snug fit; will not slip or misadjust
- Constructed of high-impact polymer, lightweight aluminum and stainless steel materials that resist rust/corrosion
- Independent adjustment of upper and lower torso to accommodate seasonal clothing



## PIVOTLINK™ CONNECTION

- **Unique rotary design provides greater comfort in bending/mobility**
- Better ergonomic fit with unique hip rotation point
- Independent adjustment of upper and lower torso
- **Provides attachment point for belts/tools/accessories**
- Lightweight design and materials resist rust/corrosion



## SELF- CONTAINED LABEL PACK

- **Integrated pack encapsulates labels minimizing damage and loss**
- Conveniently positioned on the chest for easy access
- Durable, polymer construction for extended service life
- Integrated and oversized pull-free lanyard rings



## ERGOARMOR™ BACK SHIELD

- **Semi-flexible back shield minimizes impact from sharp/heavy snap hooks and self-retracting lifelines**
- Self-adjusting channels conform to a variety of body shapes
- Padding conforms to unlimited back contours while allowing superior air flow
- **Knitted mesh membrane minimizes moisture absorption and maintains optimal air circulation; helps position back D-ring correctly for 95% of workers**
- The oversized back D-ring minimizes "false" connections
- **Stand-up back D-ring simplifies connection**
- Specially-designed recesses in back shield accommodate custom identification

## INTEGRATED ACCESSORY SYSTEM

- **Modular attachment design provides connection points for belts/tools/accessories**
- Attach/remove accessories for greater comfort and convenience
- Designed to distribute the weight of accessories across the hips and shoulders for comfort and mobility
- Integrated and oversized pull-free lanyard rings
- **Optional universal attachment clips available**



# INTEGRATED ACCESSORY SYSTEM

The PivotLink Connection provides an attachment point for a multitude of accessories and individual tool pouches with an innovative design that accommodates:

- Pouches, tool holders, cell phones, water bottles and more
- A tool belt that easily attaches and detaches – distributing weight across the hips and shoulders for a more comfortable fit and greater mobility
- Universal attachment clips that fit on your existing accessories or tool rig and easily attach/detach



**1.** Accessories have a female clip that attaches and locks over the male connection point



**2.** Once attached, the accessory pivots to maintain a level position



**3.** Easily remove and/or change accessories for convenience by simply lifting from connection point



*Harness models designed with side D-rings/belt/pad also accommodate the Integrated Accessory System*



## AVAILABLE



*Mini or Regular Cell Phone/Radio Holders*



*Water Bottle Holder (Bottle not included)*



*Large Multi-Pouch Tool Bag w/2 Steel Hammer Loops*



*Padded Hammer Loop*

## BELTS



*Belt with PivotLink Attachments and 5 Accessory Connectors*

Two belt options are available, with and without a back pad. Easily snap-on or snap-off belt or complete tool rig – belt loops no longer needed.

*Accessories also standard with a tun*

## CUSTOM IDENTIFICATION



Four brightly-colored, permanent labels allow customization for date of service, specific trade, sub-contractor, etc. A write-in window allows space for individual names or other information.



## ACCESSORIES



*Medium or Large Open Bolt & Bull Pin Bag*



*2 Pocket Nail & Tool Pouch*



*Open End Pliers & Tool Holder*



*Zippered Cylindrical Utility Pouch*

## OPTIONAL PADDING



*Shoulder/Leg Pads*



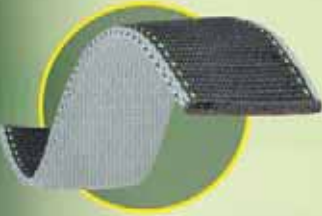
*Seat Pad*

*nel loop for conventional attachment to belts.*

# AVAILABLE WEBBING OPTIONS

## DUALTECH WEBBING

The new Miller patent-pending, DualTech webbing offers a soft, textured inside and a durable, chemical-resistant polyester outer material. Tested to 7,000 lbs. minimum tensile strength (40 percent stronger than ANSI requirements) for greater safety and longer service life.



## PYTHON<sup>®</sup> WEBBING

Patented, cushioned tubular webbing reduces stress to shoulders when using a tool belt.



## DURAFLEX<sup>®</sup> WEBBING

Patented, elastomer webbing specially-formulated to stretch.



## KEVLAR<sup>®</sup>/NOMEX<sup>®</sup> WEBBING

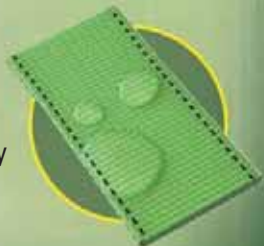
Rugged, black Kevlar outside and gray Nomex inside provide superior comfort and durability for harsh working environments.



Kevlar<sup>®</sup> and Nomex<sup>®</sup> are registered trade marks of E.I. DuPont

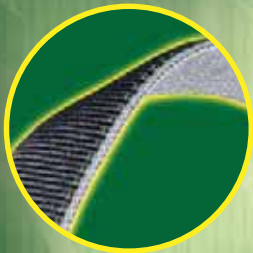
## VINYL-COATED WEBBING

Special vinyl coating on the webbing provides protection against a variety of liquids that could compromise overall performance.



# YOU ASKED. WE LISTENED.

**“It’s hard to figure out how to get my harness on at the start of the shift.”**



**DUALTECH™  
WEBBING**

From Pittsburgh to Timbuktu, DualTech webbing meets the challenges our competitors’ off-the-shelf, me-too webbing can only imagine. Shape-retention memory and two-sided texture and color design combines softness, durability and ease of donning. That wild octopus look is also eliminated by the integrated Web Finials that secure loose webbing while making adjusting your harness much easier.

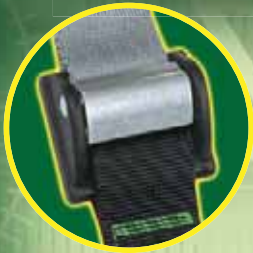
**“I only need it a couple times a year, but it’s always in the way.”**



**SELF-CONTAINED  
LABEL PACK**

Get inspection off your back. Conveniently located on your chest, the compact label pack holds the all-important documentation the boss requires.

**“I wish I didn’t have to fight with my harness just to get it adjusted, or keep it adjusted.”**



**GAM BUCKLE**

Frustrated at how tough it is to adjust your harness? Well, there’s no longer a one-finger response to adjustment. Just use your thumbs and index fingers to simultaneously adjust both shoulder straps. It’s easier than tying your shoes, and won’t slip or require regular adjustment.

**“All that new hardware I have snapped to my D-ring, jabs my back all day.”**



**ERGOARMOR™  
BACK SHIELD**

Let’s just say body armor with feelings. This semi-rigid back shield prevents being whacked in the back from snap hooks and retractables while providing flexible space-age materials that breathe for greater comfort and mobility. Sorry, it can’t protect you from your back-stabbing brother-in-law. It can however, help assure your back D-ring will always be in the right place at the right time.

**“To do my job, I’m always bending and twisting ... I wish my harness moved with me.”**



**PIVOTLINK™  
CONNECTION**

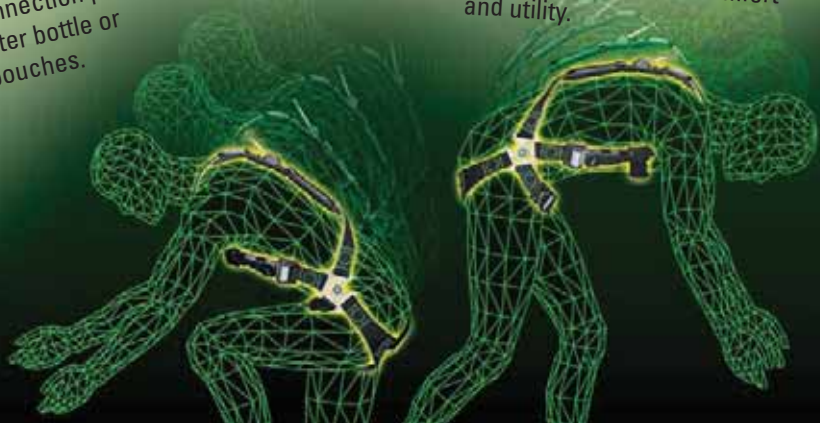
Cool, way cool! Clint Eastwood, Dirty Harry cool. Because it rotates with you, there’s no pulling or tugging on your shoulders or neck, and no more harness wedgies. It also creates the perfect connection point for a tool belt, water bottle or tool storage pouches.

**“I have to wear my harness, and need my tools ... I just wish it was easier.”**



**INTEGRATED  
ACCESSORY  
SYSTEM**

All aboard for the convenience train. This modular system jazzes up your rig and creates a convenient, comfortable way to snap-on, snap-off belts, tools and accessories. Never let carrying your tools or supplies feel like you’re carrying the weight of the world, because now it’s all evenly distributed across your hips and shoulders for greater comfort and utility.



# MILLER REVOLUTION HARNESSES & ACCESSORIES

## REVOLUTION HARNESS WITH DUALTECH WEBBING

SKU	Standard Features	Special Features*
RDT-QC/U	• Quick-Connect Chest Buckles	Quick-Connect Buckle Legs
RDT-TB/U		Tongue Buckle Legs
RDT-QC-B/U	• Cam Buckles	Removable Belt, Quick-Connect Buckle Legs
RDT-TB-B/U	• ErgoArmor Back Shield	Removable Belt, Tongue Buckle Legs
RDT-QC-DP/U	• Stand-Up D-Ring	Side D-Rings & Pad, Quick-Connect Buckle Legs
RDT-TB-DP/U	• Self-Contained Label Pack	Side D-Rings & Pad, Tongue Buckle Legs
RDT-QC-BDP/U	• Web Finales	Removable Belt, Side D-Rings & Pad, Quick-Connect Buckle Legs
RDT-TB-BDP/U		Removable Belt, Side D-Rings & Pad, Tongue Buckle Legs

## REVOLUTION HARNESS WITH DURAFLEX® WEBBING

SKU	Standard Features	Special Features*
RDF-QC/U	• Quick-Connect Chest Buckles	Quick-Connect Buckle Legs
RDF-TB/U		Tongue Buckle Legs
RDF-QC-B/U	• Cam Buckles	Removable Belt, Quick-Connect Buckle Legs
RDF-TB-B/U	• ErgoArmor Back Shield	Removable Belt, Tongue Buckle Legs
RDF-QC-DP/U	• Stand-Up D-Ring	Side D-Rings & Pad, Quick-Connect Buckle Legs
RDF-TB-DP/U	• Self-Contained Label Pack	Side D-Rings & Pad, Tongue Buckle Legs
RDF-QC-BDP/U	• Web Finales	Removable Belt, Side D-Rings & Pad, Quick-Connect Buckle Legs
RDF-TB-BDP/U		Removable Belt, Side D-Rings & Pad, Tongue Buckle Legs

## REVOLUTION HARNESS WITH PYTHON® WEBBING

SKU	Standard Features	Special Features*
RPY-QC/U	• Quick-Connect Chest Buckles	Quick-Connect Buckle Legs
RPY-TB/U		Tongue Buckle Legs
RPY-QC-B/U	• Cam Buckles	Removable Belt, Quick-Connect Buckle Legs
RPY-TB-B/U	• ErgoArmor Back Shield	Removable Belt, Tongue Buckle Legs
RPY-QC-DP/U	• Stand-Up D-Ring	Side D-Rings & Pad, Quick-Connect Buckle Legs
RPY-TB-DP/U	• Self-Contained Label Pack	Side D-Rings & Pad, Tongue Buckle Legs
RPY-QC-BDP/U	• Web Finales	Removable Belt, Side D-Rings & Pad, Quick-Connect Buckle Legs
RPY-TB-BDP/U		Removable Belt, Side D-Rings & Pad, Tongue Buckle Legs

## REVOLUTION HARNESS WITH KEVLAR®-NOMEX® WEBBING

SKU	Standard Features	Special Features*
RKN-QC/U	• Quick-Connect Chest Buckles	Quick-Connect Buckle Legs
RKN-TB/U		Tongue Buckle Legs
RKN-QC-B/U	• Cam Buckles	Removable Belt, Quick-Connect Buckle Legs
RKN-TB-B/U	• ErgoArmor Back Shield	Removable Belt, Tongue Buckle Legs

## REVOLUTION HARNESS WITH VINYL-COATED WEBBING

SKU	Standard Features	Special Features*
RPC-TB/UGN	• Stand-Up D-Ring	• Cam Buckles
RPC-TB-BD/UGN	• Self-Contained Label Pack	• Web Finales
	• Mating Chest Buckle	• D-Ring Back Pad
		Tongue Buckle Legs
		Removable Belt with Side D-Rings, Tongue Buckle Legs

SKU numbers listed are for **Universal** size. Harnesses are also available in **Small/Medium** and **XXL/XXXLarge**, by replacing the "U" in the SKU number with "S/M" or "XXL/XXXL" (Ex: RDT-QC-B/XXL/XXXL).

For front D-ring vest-style option, add "FD" to the corresponding harness SKU number (Ex: RDTFD-QC/U).

All Miller brand fall protection products meet applicable OSHA, ANSI and CSA requirements.

Rated to 400 lbs. (181.4 kg) capacity.

## ACCESSORIES

SKU	Description
RIA-T1/	Mini Cell Phone Holder w/Snap-On Connector
RIA-T2/	Regular Cell Phone/Jobsite Radio Holder, w/Snap-On Connector
RIA-T3/	Water Bottle Holder, 1 Qt.
RIA-T4/	Large Open Bolt & Bull Pin Bag w/Quick-Release Tool Snap
RIA-T5/	Medium Open Bolt & Bull Pin Bag
RIA-T6/	2 Pocket Nail & Tool Pouch
RIA-T7/	Large Multi-Pouch Tool Bag w/2 Steel Hammer Loops
RIA-T8/	Padded Hammer Loop
RIA-T9/	Open End Pliers & Tool Holder
RIA-T10/	Zippered Cylindrical Utility Pouch

## OPTIONAL PADDING

RIA-P1/	Shoulder/Leg Pads (2 pack)
RIA-P2/	Seat Pad

## CONNECTION POINTS

RIA-C1/	Sliding Belt Accessory Connectors (3 pack)
RIA-C2/	Universal Accessory & Belt Attachment Clip (2 pack)

## BELTS (Fits sizes 32" to 54")

RIA-B1/	Belt with PivotLink Attachments, 5 Accessory Connectors
RIA-B2/	Belt w/Pad and PivotLink Attachments, 5 Accessory Connectors

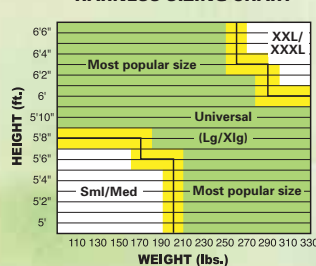
## IDENTIFICATION KITS

RIA-BL/	(10) Blue Self-Adhesive Labels w/Write-In Window
RIA-YL/	(10) Yellow Self-Adhesive Labels w/Write-In Window
RIA-RD/	(10) Red Self-Adhesive Labels w/Write-In Window
RIA-GN/	(10) Green Self-Adhesive Labels w/Write-In Window

## ACCESSORY KITS & RIGS (Fits sizes 32" to 54")

SKU	Description
RIA-K1/ (Job Kit 1)	• Mini Cell Phone Holder w/Snap-On Connector • Water Bottle Holder
RIA-K2/ (Job Kit 2)	• Regular Cell Phone Holder/Jobsite Radio Holder w/Snap-On Connector • Water Bottle Holder • Large Multi-Pouch Tool Bag w/2 Steel Hammer Loops
RIA-R1/ (Tool Rig 1)	• Belt with PivotLink Attachments • 5 Accessory Connectors • Large Multi-Pouch Tool Bag w/2 Steel Hammer Loops • 2 Pocket Nail & Tool Pouch • Zippered Cylindrical Utility Pouch
RIA-R2/ (Tool Rig 2)	• Belt w/Pad and PivotLink Attachments • 5 Accessory Connectors • Large Multi-Pouch Tool Bag w/2 Steel Hammer Loops • 2 Pocket Nail & Tool Pouch • Zippered Cylindrical Utility Pouch
RIA-R3/ (Tool Rig 3)	• Belt with PivotLink Attachments • 5 Accessory Connectors • 2 Large Open Bolt & Bull Pin Bags • Padded Hammer Loop
RIA-R4/ (Tool Rig 4)	• Belt w/Pad and PivotLink Attachments • 5 Accessory Connectors • 2 Large Open Bolt & Bull Pin Bags • Padded Hammer Loop

## HARNESS SIZING CHART



## \*SPECIAL FEATURES



This equipment should only be used in conjunction with the manufacturer's instructions. Failure to follow instructions could result in serious injury or fatality.



by Honeywell

Toll Free 800/873-5242 Fax 800/892-4078

Phone 814/432-2118 Fax 814/432-2415

www.millerfallprotection.com

For more information or to place an order, please contact your Miller® distributor:

LMREVBRO/0511/5M/RPI